

DISCUSSION QUESTIONS

A. Water Management Strategies:

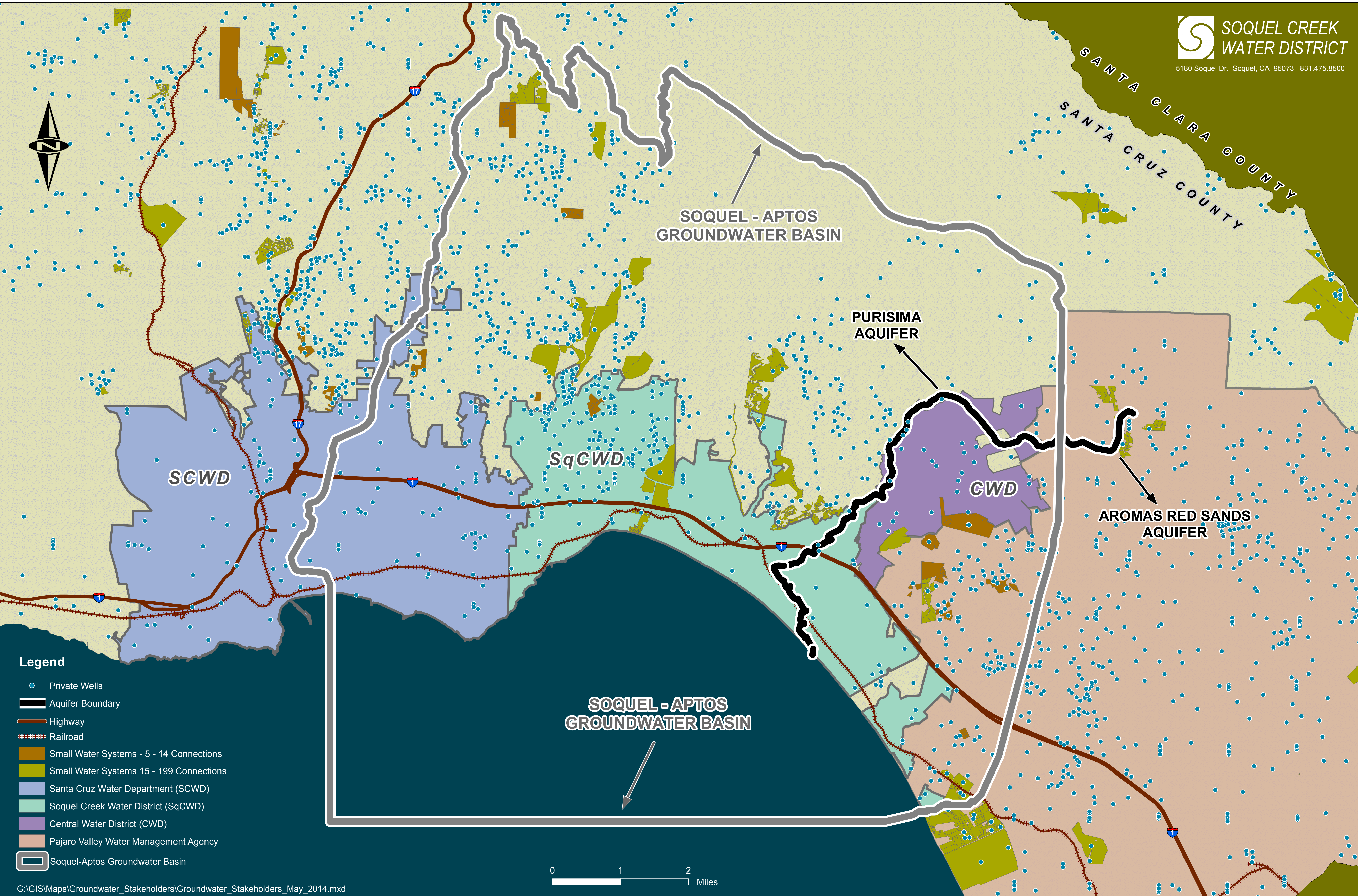
1. Do you believe we can manage our groundwater sustainably through conservation or is there a need to increase supply as well?
2. Where are the best opportunities for expanded conservation (e.g., indoors, outdoors, particular sectors, etc.)?
3. Where are the best opportunities for expanded supply (e.g., expanding recharge; expanding storage; recycling water; inter-jurisdictional water transfers, etc.)?

B. Allocating Costs Associated With Sustainable Groundwater Management:

1. If a surcharge is required to cover the cost of managing groundwater sustainably, what functions should the surcharge support – i.e. monitoring, reporting, determining pumping limits, financial management, stakeholder outreach and collaboration, coordinating with adjacent basins, etc.?
2. If such a surcharge is needed, how can it be shared fairly by water customers? Should all contribute, or only certain types? Should all contributors pay equally?

C. What other information do we need to address these questions?

SANTA CLARA COUNTY
 SANTA CRUZ COUNTY



SOQUEL - APTOS
GROUNDWATER BASIN

PURISIMA
AQUIFER

SCWD

SqCWD

CWD

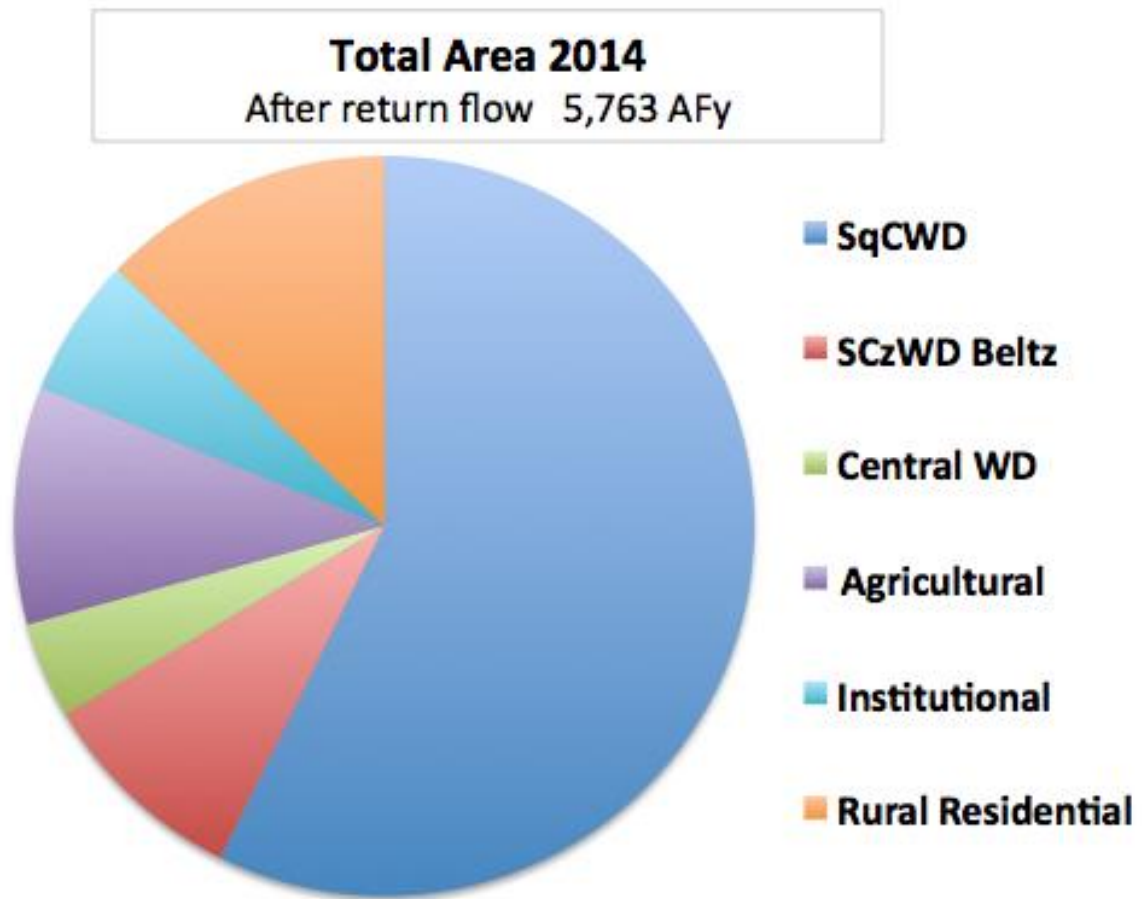
AROMAS RED SANDS
AQUIFER

SOQUEL - APTOS
GROUNDWATER BASIN

Legend

- Private Wells
- ▬ Aquifer Boundary
- ▬ Highway
- ▬ Railroad
- Small Water Systems - 5 - 14 Connections
- Small Water Systems 15 - 199 Connections
- Santa Cruz Water Department (SCWD)
- Soquel Creek Water District (SqCWD)
- Central Water District (CWD)
- Pajaro Valley Water Management Agency
- ▭ Soquel-Aptos Groundwater Basin



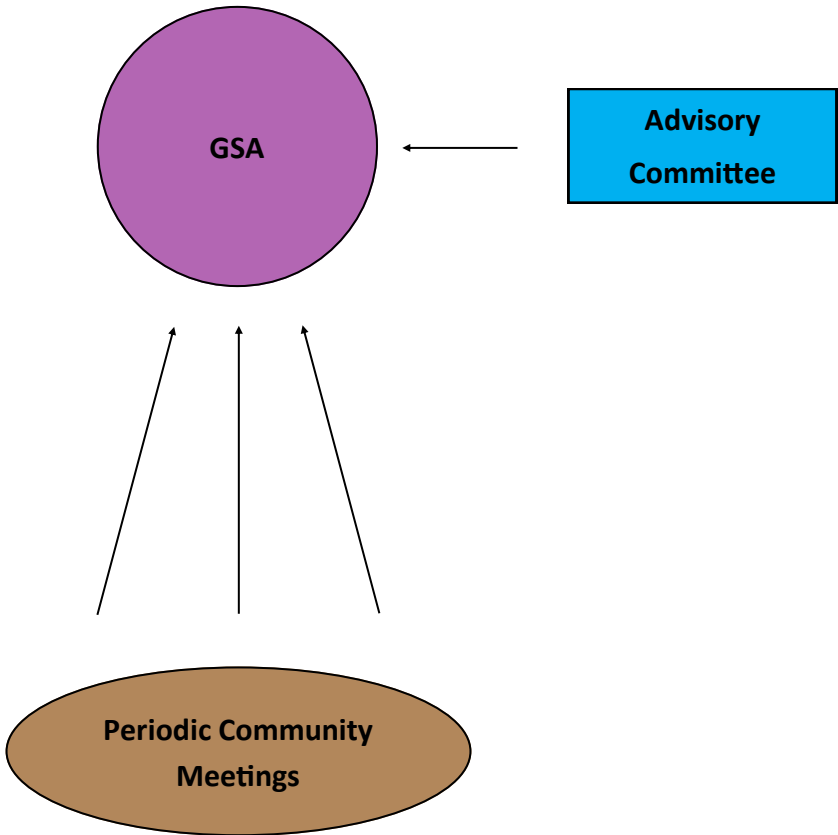


Source: Analysis by Jon Kennedy and John Ricker, based on Santa Cruz County data.

Community Engagement During GSP Development for the Soquel-Aptos Groundwater Management Area:

Model 1:

INPUT-ORIENTED ADVISORY COMMITTEE



Notes:

- Model 1 includes Advisory Committee (as does Model 2), but in this one, GSA is not part of the committee. Here, Committee functions in “input” model, while in Model 2, it functions in “collaboration” mode.
- Model 1 includes periodic community events, as do all 3 models, but Model 3 puts much more emphasis on this element and expands the number, type, and frequency of community events in lieu of an Advisory Committee.

Community Engagement During GSP Development for the Soquel-Aptos Groundwater Management Area:

Model 2.A:

GSA/ADVISORY COMMITTEE COLLABORATION



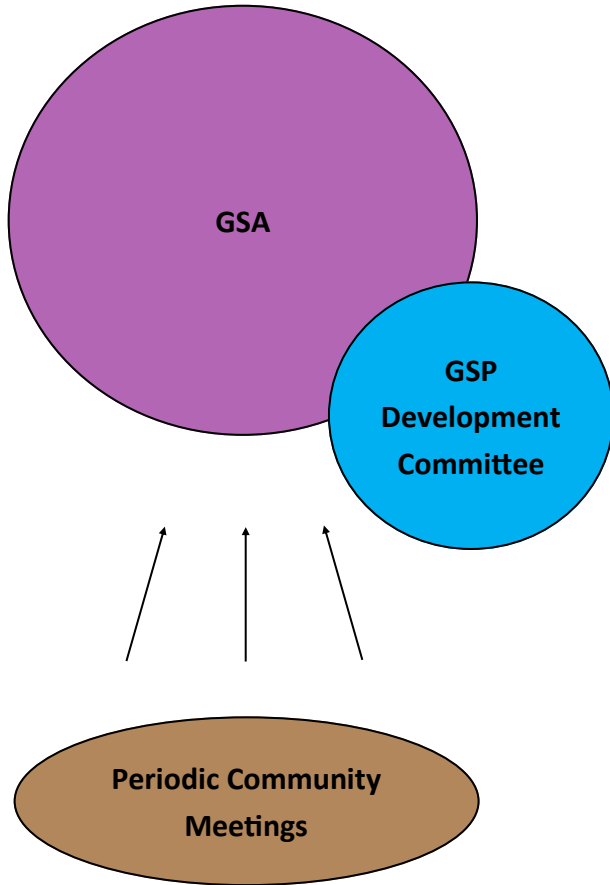
Notes:

- In Model 2, the GSA is a part of the Advisory Committee. Participants work collaboratively to develop the content of the groundwater Sustainability Plan.
- Model 2 requires intensive staff, participant, and consultant time.

Community Engagement During GSP Development for the Soquel-Aptos Groundwater Management Area:

MODEL 2.B:

GSA/ADVISORY COMMITTEE COLLABORATION VIA SUBGROUP

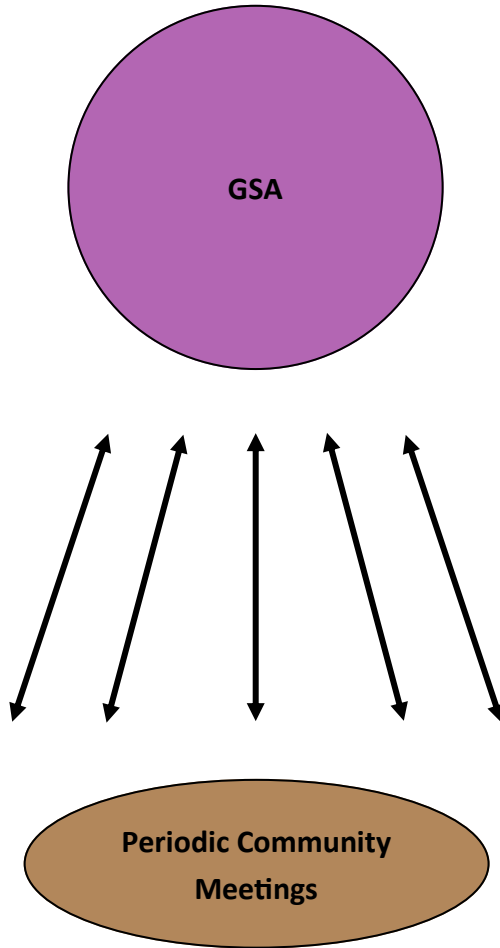


Notes:

- In Model 2, some members of the GSA are part of the Advisory Committee, but not all. In addition, the Advisory Committee may include some members who are not part of the GSA.
- Advisory Committee members develop recommendations for GSA consideration.
- Model 2 requires intensive staff, participant, and consultant time.

Community Engagement During GSP Development for the Soquel-Aptos Groundwater Management Area:

MODEL 3: EXPANDED COMMUNITY INPUT OPPORTUNITIES



Note:

- Model 3 does not include an Advisory Committee, but includes more frequent, interactive, and varied community events through which the GSA can elicit stakeholder input.