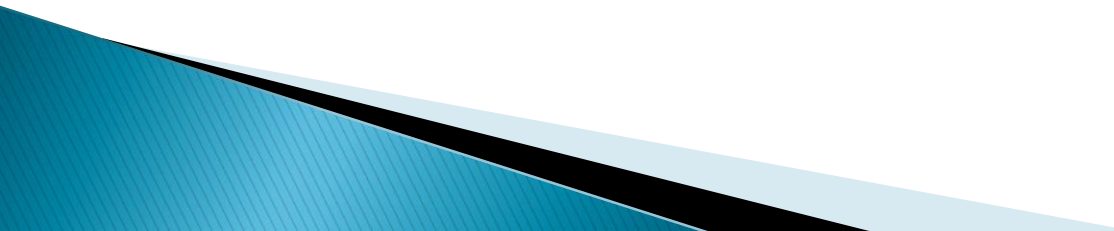


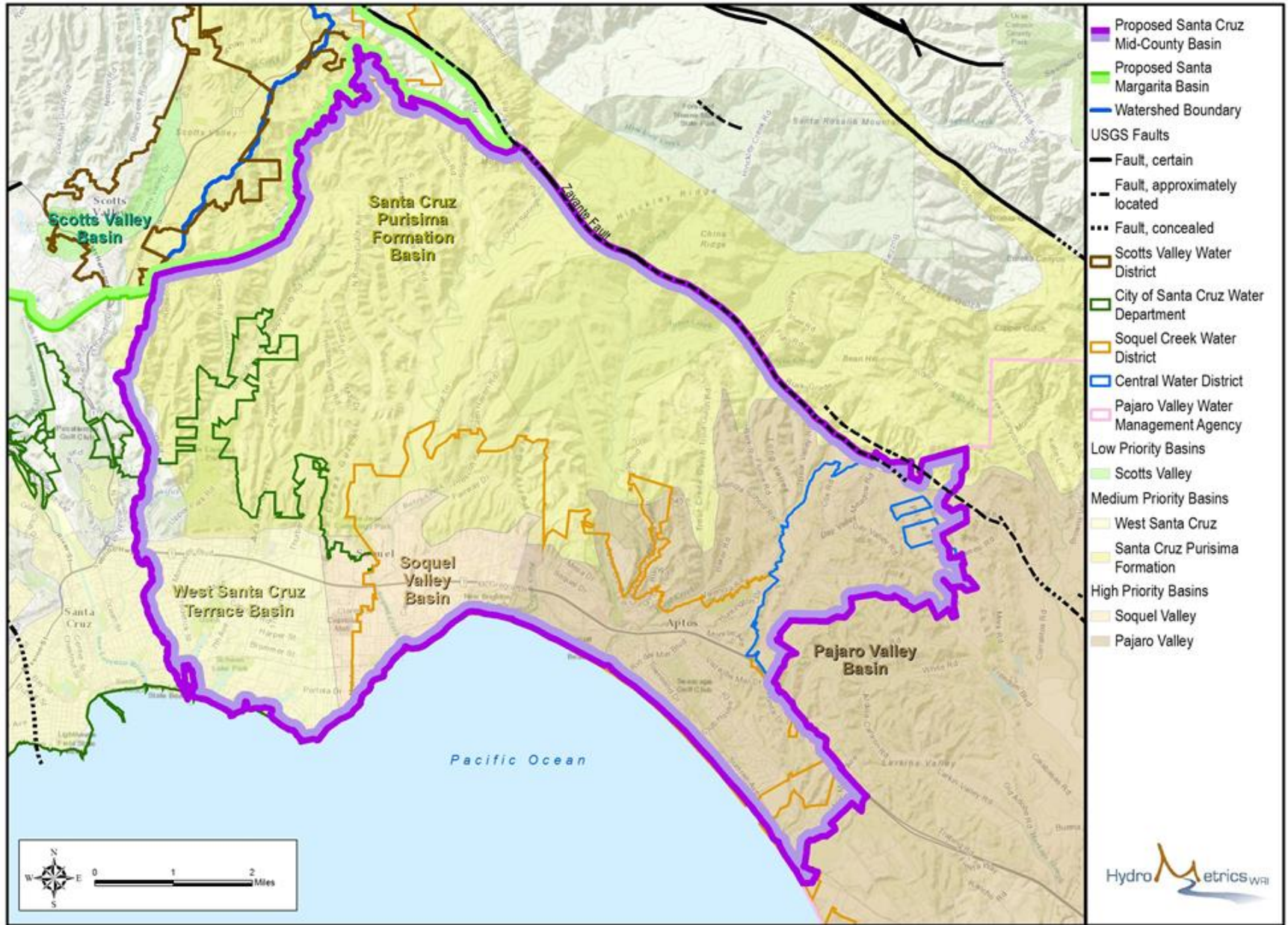
Meeting for Agricultural and Commercial Well Users

Mid-County Groundwater Basin
January 31, 2017

Meetings are Sponsored by:

- ▶ Santa Cruz Mid-County Groundwater Agency
 - Soquel Creek Water District
 - Central Water District
 - City of Santa Cruz
 - County of Santa Cruz
 - ▶ With assistance from:
 - California Department of Water Resources
 - State Water Resources Control Board
 - ▶ Funding assistance through Proposition 1
- 

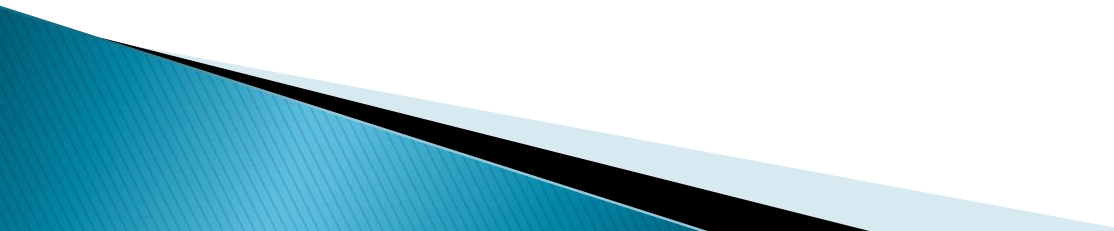
Santa Cruz Mid-County Basin



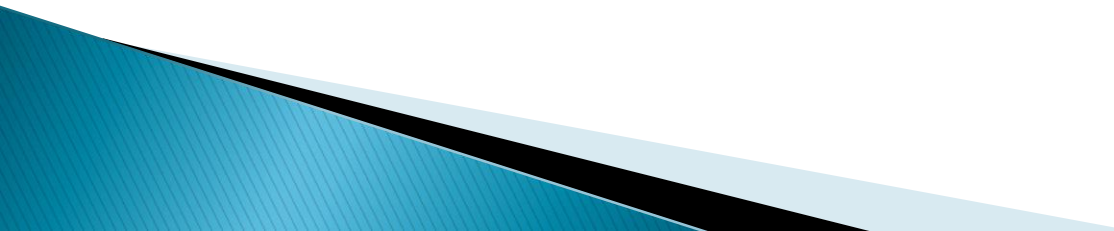
Purpose of Groundwater User Meetings

- ▶ Share information about:
 - Sustainable Groundwater Management Act of 2014 (SGMA)
 - Mid-County Groundwater Agency
- ▶ Develop common understanding of issues.
 - Mid-County Groundwater Basin
 - Groundwater Hydrology
 - Threats to the Basin
- ▶ Discuss Plan Development Process for basin protection and management strategies.
- ▶ Discuss the role and responsibilities of non-agency groundwater pumpers.
- ▶ There will be many more meetings for private well users (Nine Meetings since May, 2014)

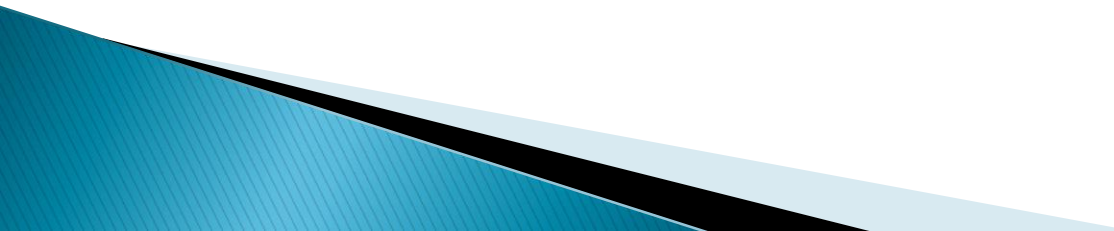
Focus on Larger Private Well Users

- ▶ Agriculture, Commercial, Institutional Use
 - ▶ Domestic Use greater than 2 acre-feet/year (five or more homes)
 - ▶ Subject to increased oversight under SGMA
 - ▶ Potential for metering and fees proportional to impact on the basin overdraft
 - ▶ May be other options to mitigate those impacts through water use efficiency groundwater recharge and enhanced storage
- 

Topics Tonight

- ▶ Overview of SGMA – State Requirements
 - ▶ Management Efforts in Mid-County Basin
 - Basin Boundaries
 - Current Issues and Opportunities
 - Mid-County Groundwater Agency
 - Plan Development
 - ▶ Water Use and Impacts in the Basin
 - Estimating water use
 - Groundwater model to assess impacts
 - ▶ Services available for well users
 - ▶ Question and Discussion
- 

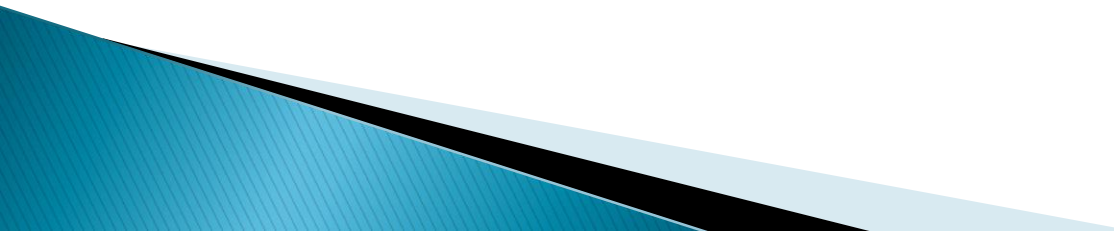
Meeting Ground Rules

- ▶ Promote exchange of information and discussion of ideas.
 - ▶ Be respectful of others, do not accuse or blame, or dwell on past actions.
 - ▶ There will be many future opportunities for public input and potential opportunities for votes as prescribed by law (Water Code, Prop 218)
 - ▶ Generally there will be opportunity for discussion and questions on topics at hand throughout the meeting, with general discussion at the end.
 - ▶ Not the time or place for in-depth discussion of agency options such as Pure Water Soquel
- 

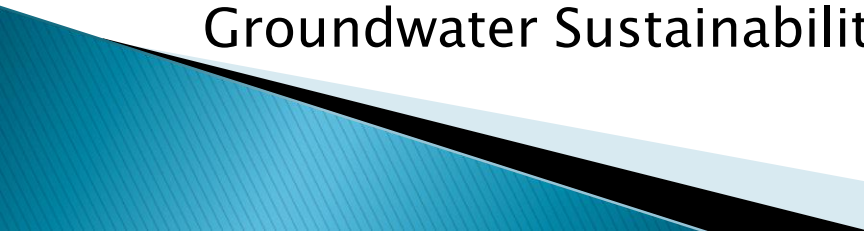
SGMA

- ▶ Darcy Pruitt

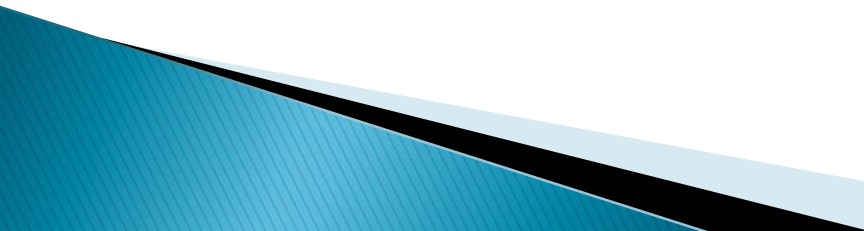
SGMA Status in Santa Cruz County

- ▶ Three Groundwater Basins of Concern in Santa Cruz County
 - Pajaro – PVWMA
 - Santa Cruz Mid-County
 - Santa Margarita
 - ▶ Joint Powers Agreement for Santa Cruz Mid-County Groundwater Agency, March 2016
 - ▶ Development of Groundwater Sustainability Plans by 2020, with Stakeholder input
- 

SGMA Efforts in Mid-County

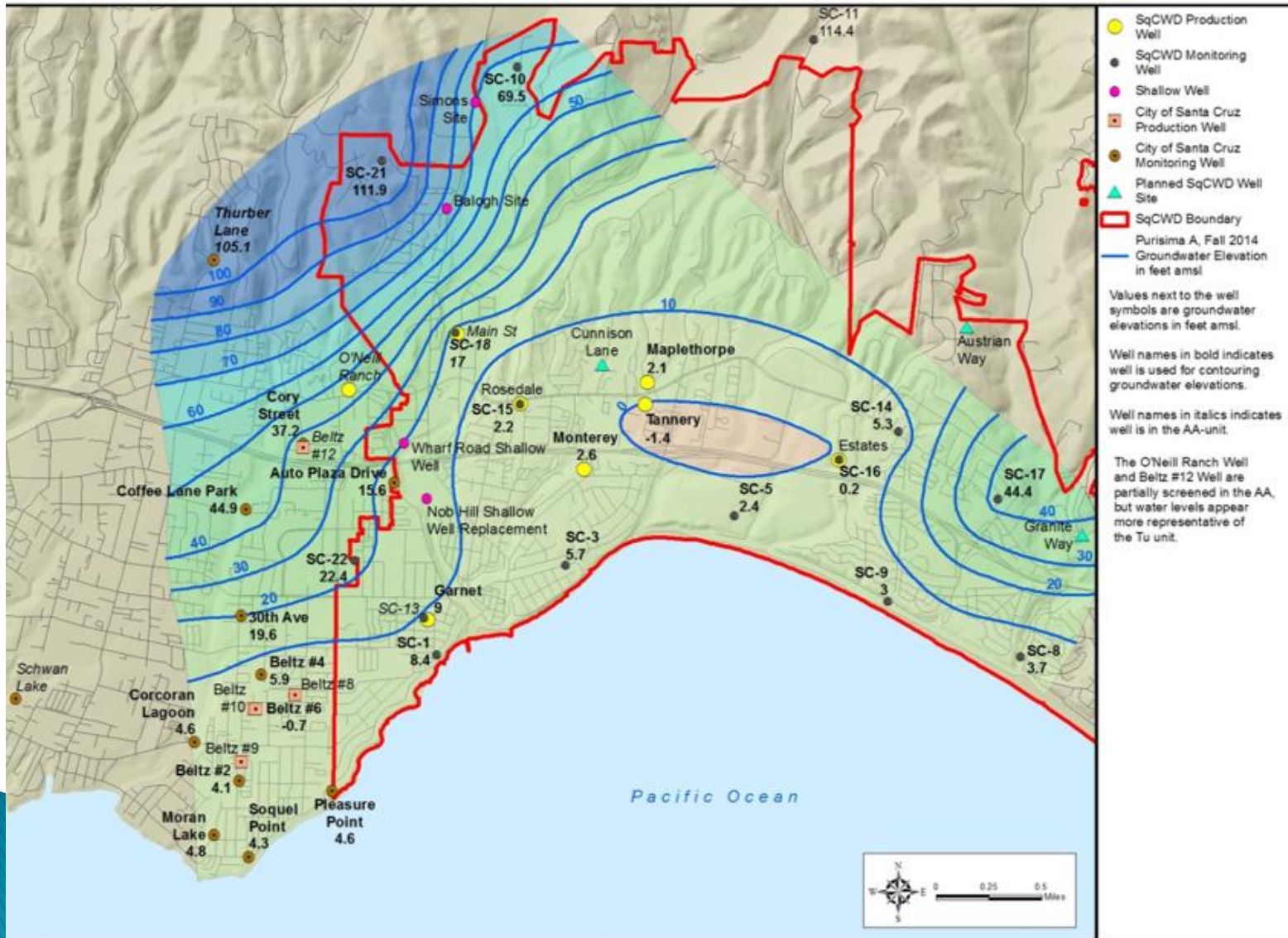
- ▶ AB 3030 Groundwater Management Plan – 2008
 - ▶ Formed Soquel–Aptos Groundwater Management Committee
 - Soquel Creek Water District
 - Central Water District
 - City of Santa Cruz
 - County
 - ▶ Formed Mid-County Groundwater Agency (MGA)– March 2016
 - ▶ MGA Board has 11 members, including 3 private well representatives. Meets every other month.
 - ▶ Updated Basin Boundary: March–December 2016
 - ▶ Evaluating groundwater use and modeling groundwater basin conditions
 - ▶ Updating Groundwater Plan to meet requirements of a Groundwater Sustainability Plan – 2020
- 

Mid-County Groundwater Basin

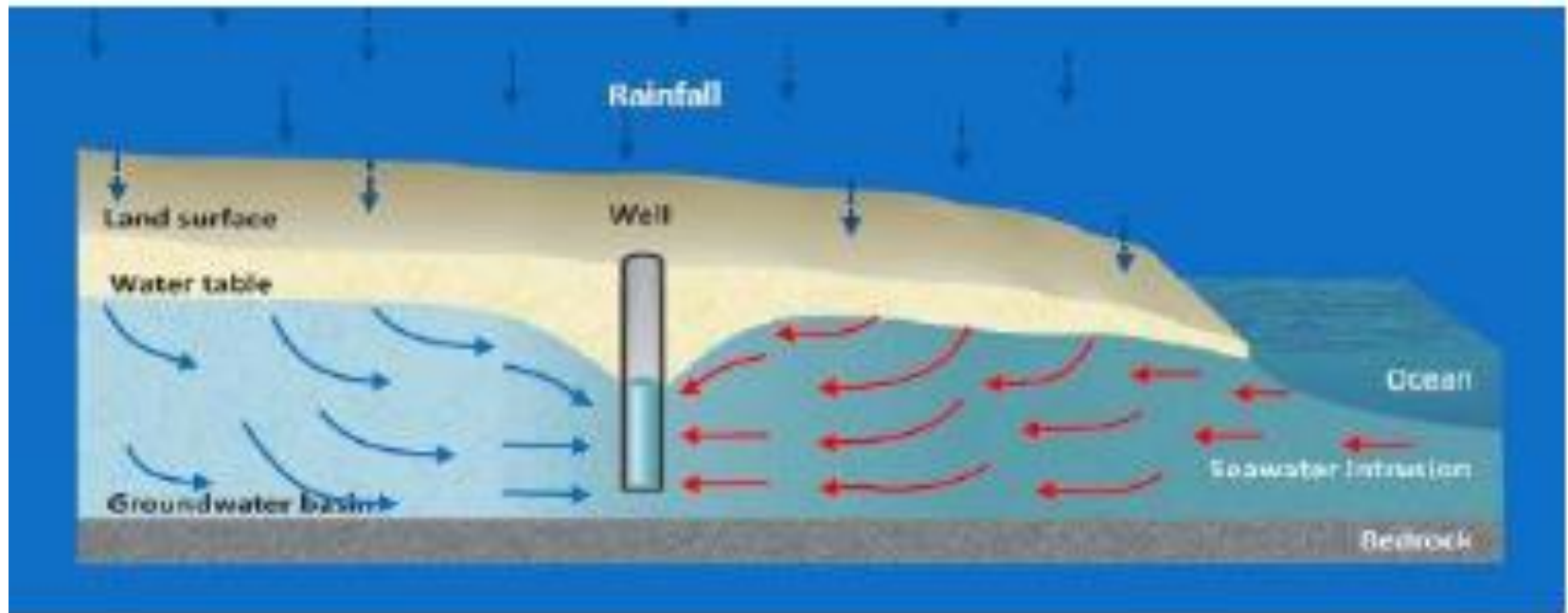
- ▶ Undesirable Conditions
 - Overdraft
 - Lowered water levels
 - Seawater intrusion occurring and could get worse
 - Loss of streamflow
 - ▶ Future impacts of climate change will reduce groundwater recharge 30% and increase demand.
 - ▶ Need to reduce water use, increase recharge to recover basin and pump at sustainable levels, without undesirable effects
- 

Depressed Groundwater Levels

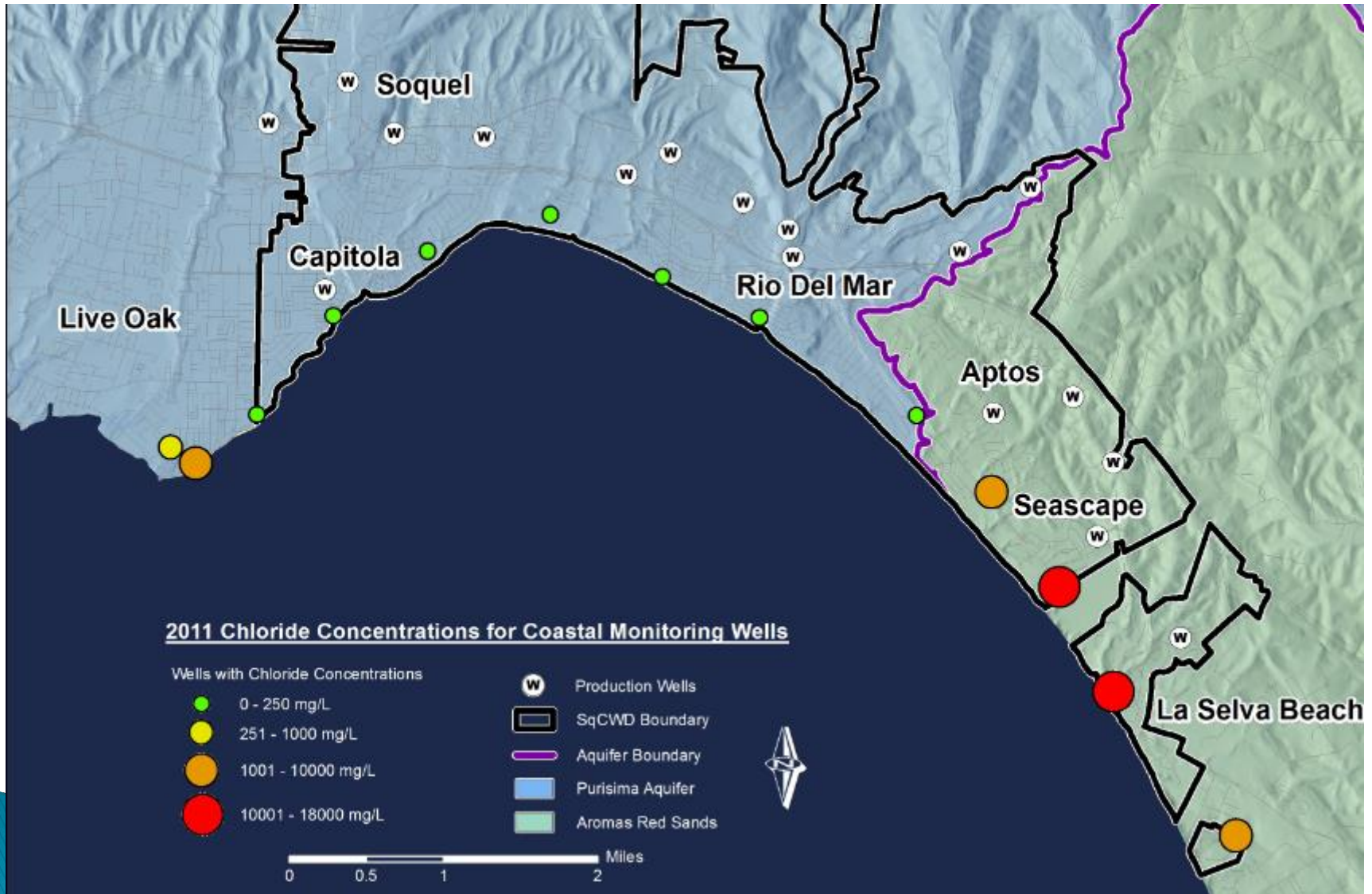
Purisima A, Fall 2014



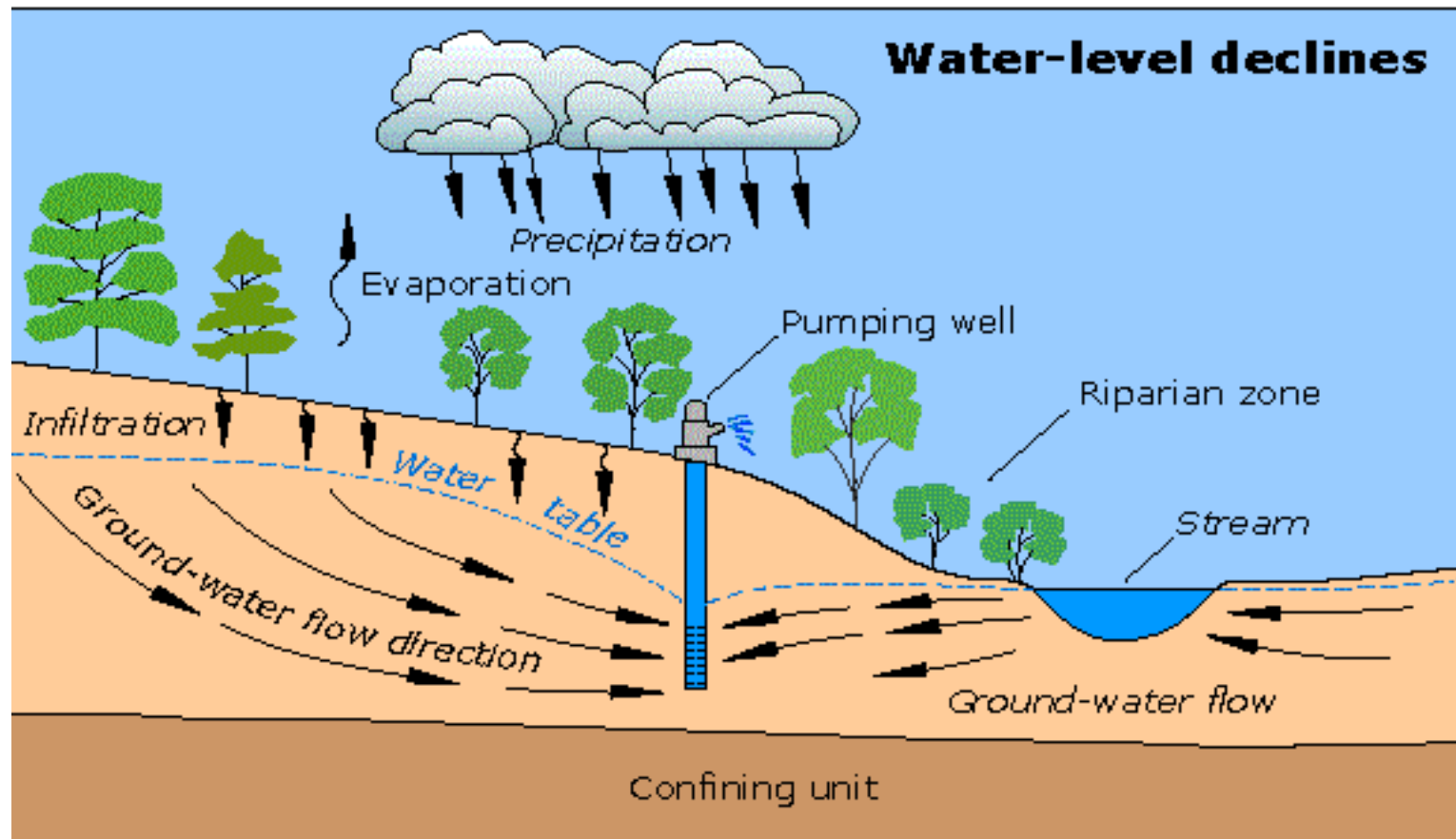
Seawater Intrusion



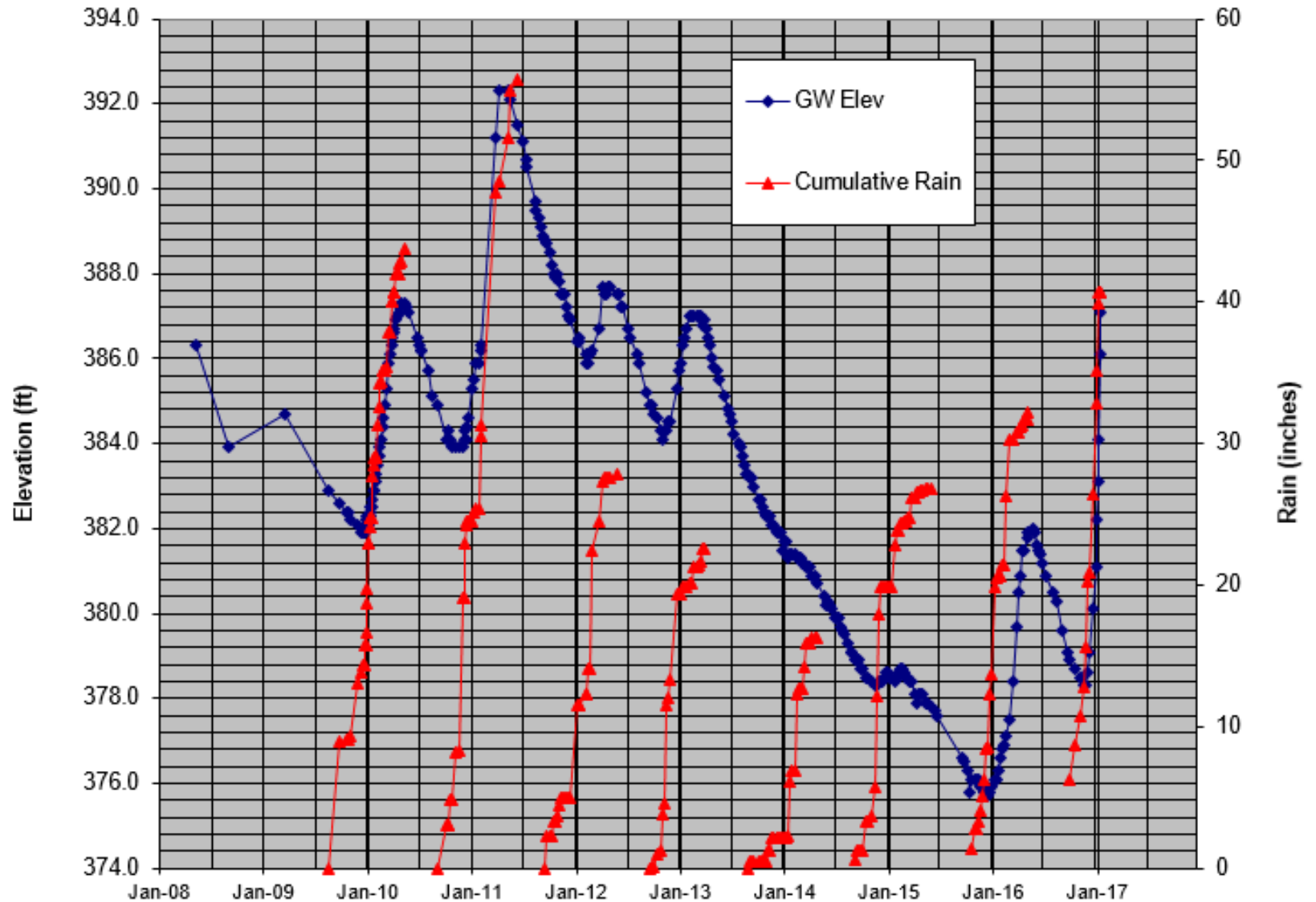
Seawater Intrusion



Streamflow Loss

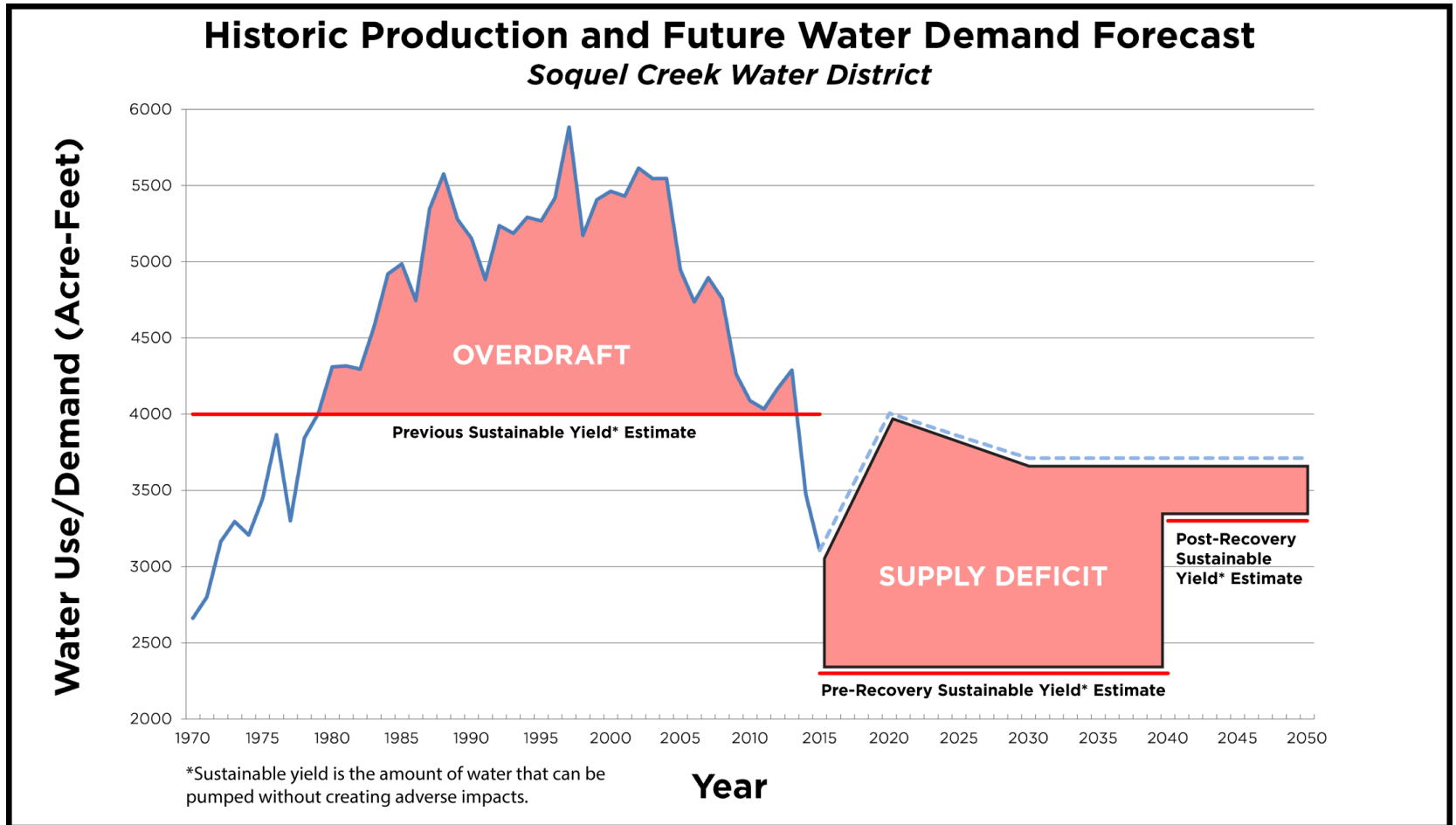


Groundwater Level Soquel Hills

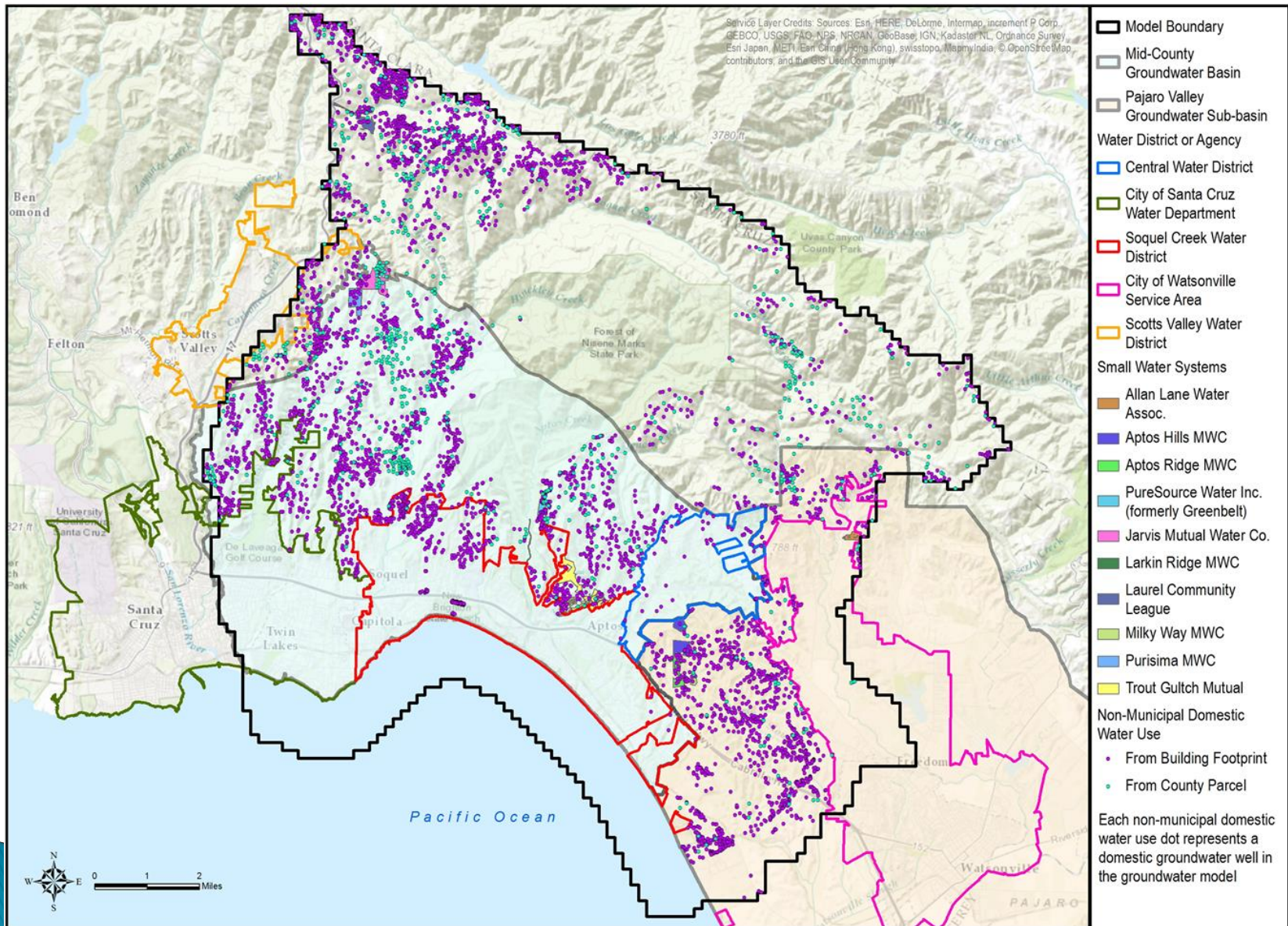


Overdraft and Recovery

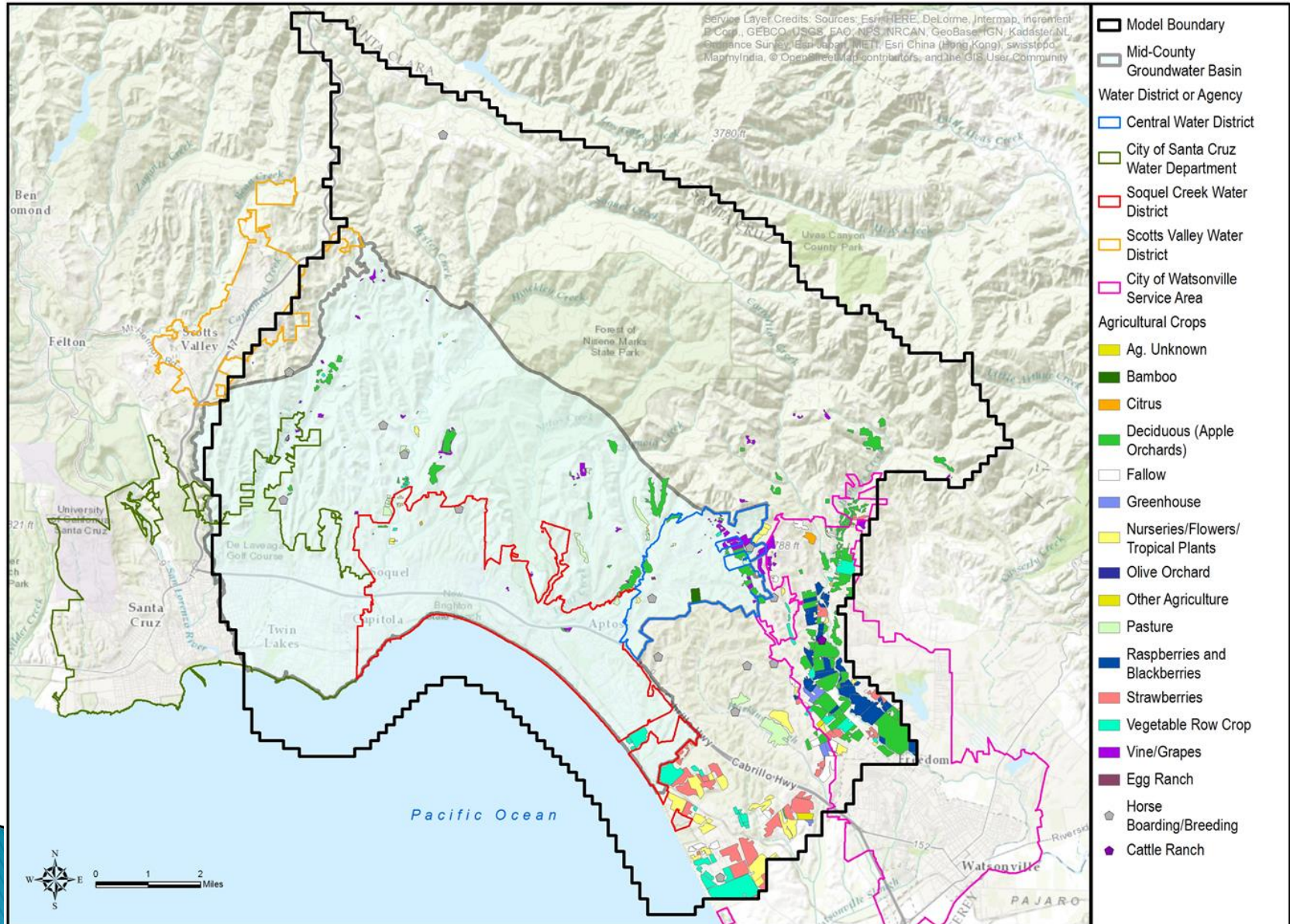
Soquel Creek Water District Share of Pumping



Domestic Wells



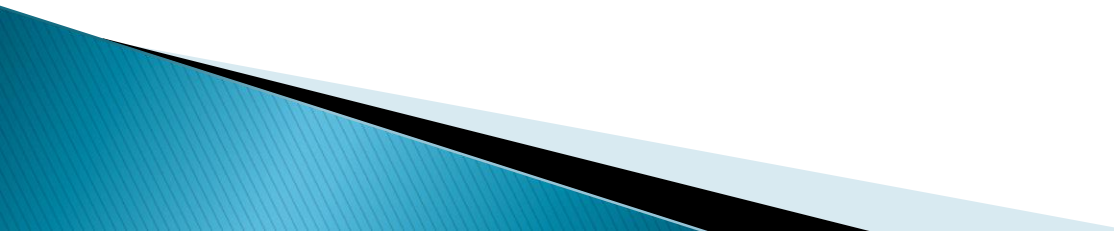
Agricultural Use



Plan development

- ▶ Update existing plan to meet new requirements
- ▶ Use groundwater model to evaluate impacts, assess management scenarios.
- ▶ Form Plan Development Committee
 - Define Objectives
 - Identify basin management measures
 - Confirm impacts and assess costs
- ▶ Potential management approaches:
 - Supplemental supply,
 - Increased water use efficiency
 - Enhanced recharge, storage

Things well owners can do now:

- ▶ Ensure water use efficiency
 - ▶ Promote groundwater recharge
 - ▶ Capture winter runoff for later use
 - ▶ Reduce dry season stream diversions
 - ▶ Monitor the MGA website
 - ▶ Complete the online survey
 - ▶ Request water level measurements
 - ▶ Consider installing a meter
 - ▶ Request a water use audit
 - ▶ Attend meetings
- 

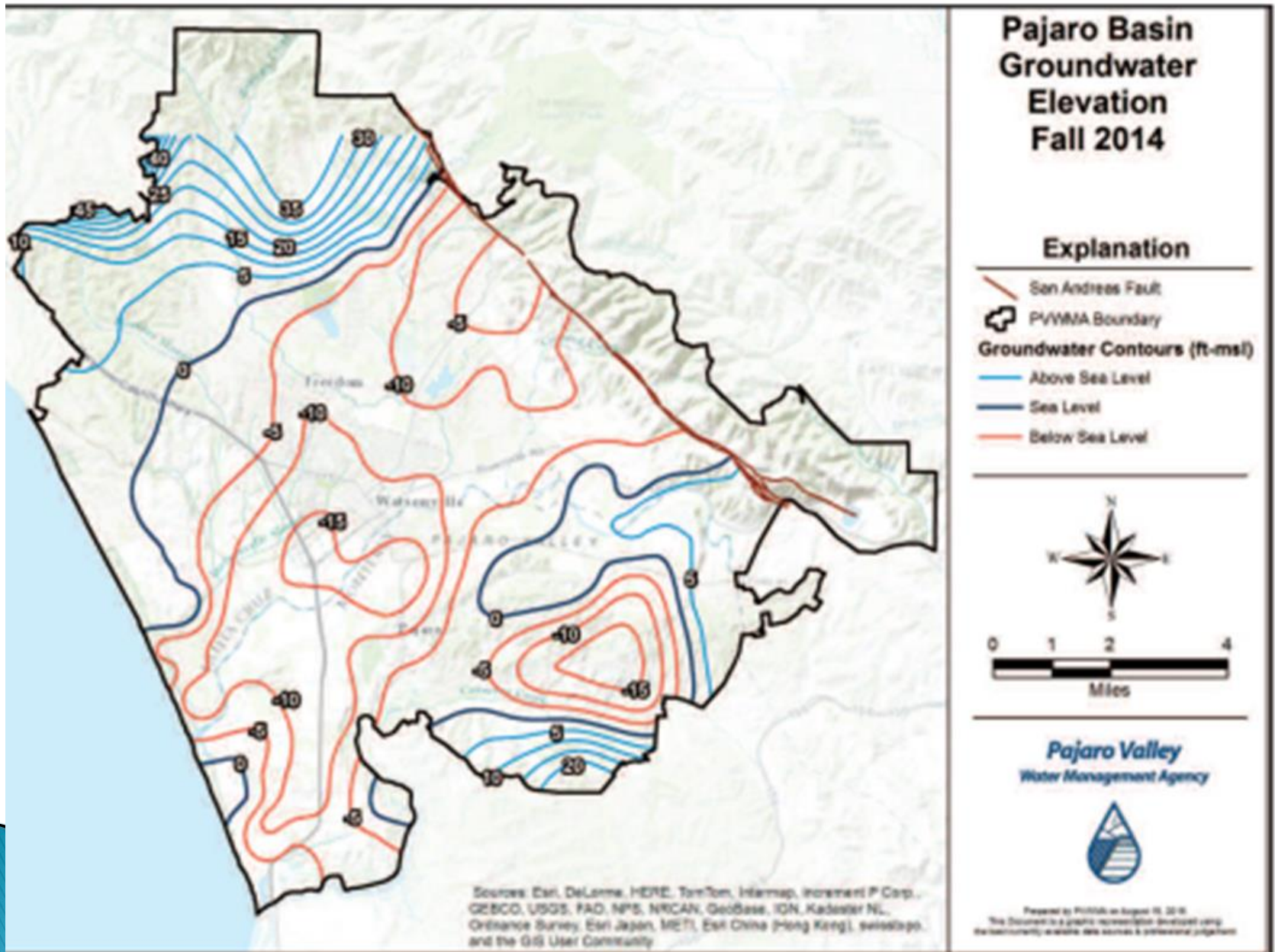
Water Use

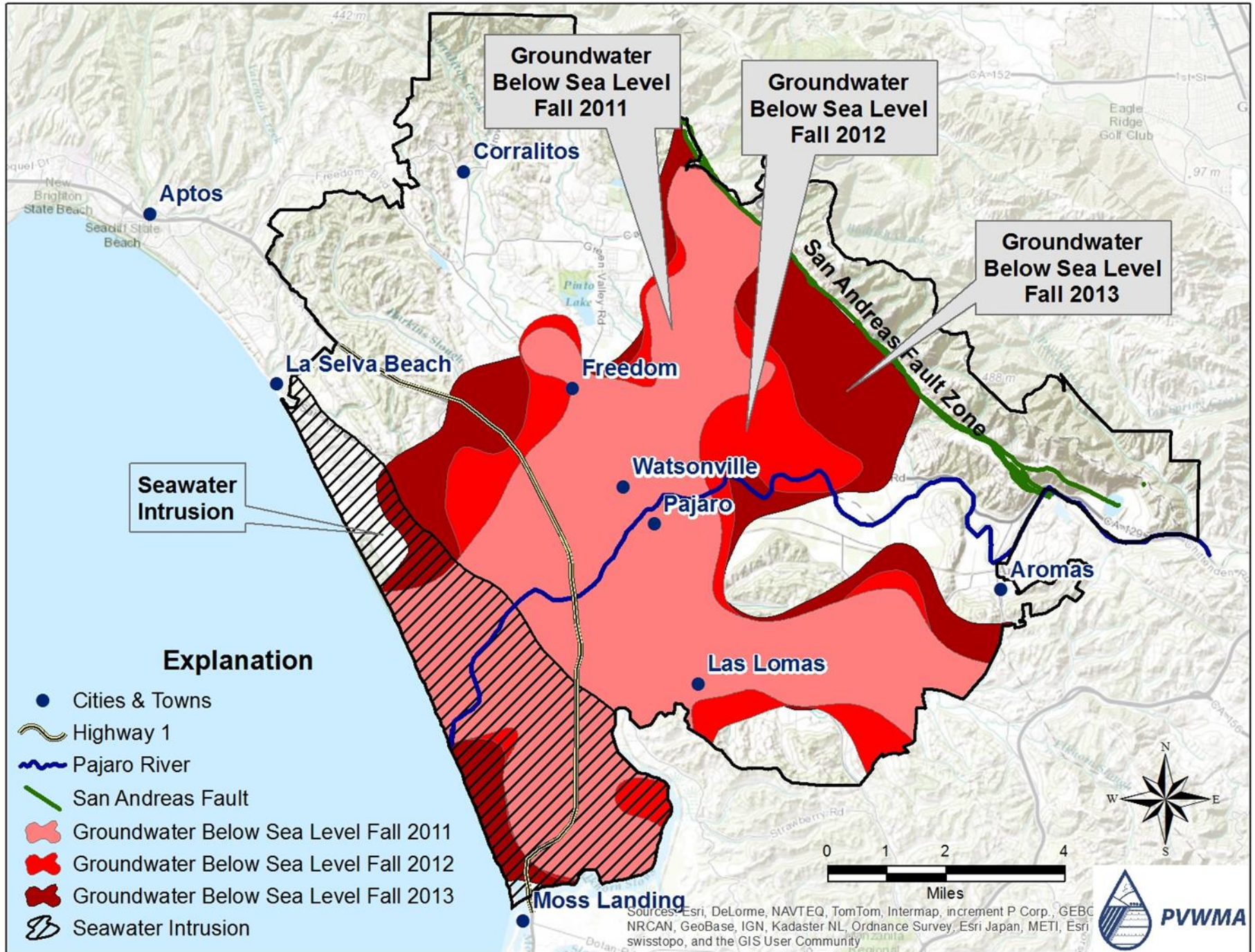
- ▶ Jon Kennedy

Background Info

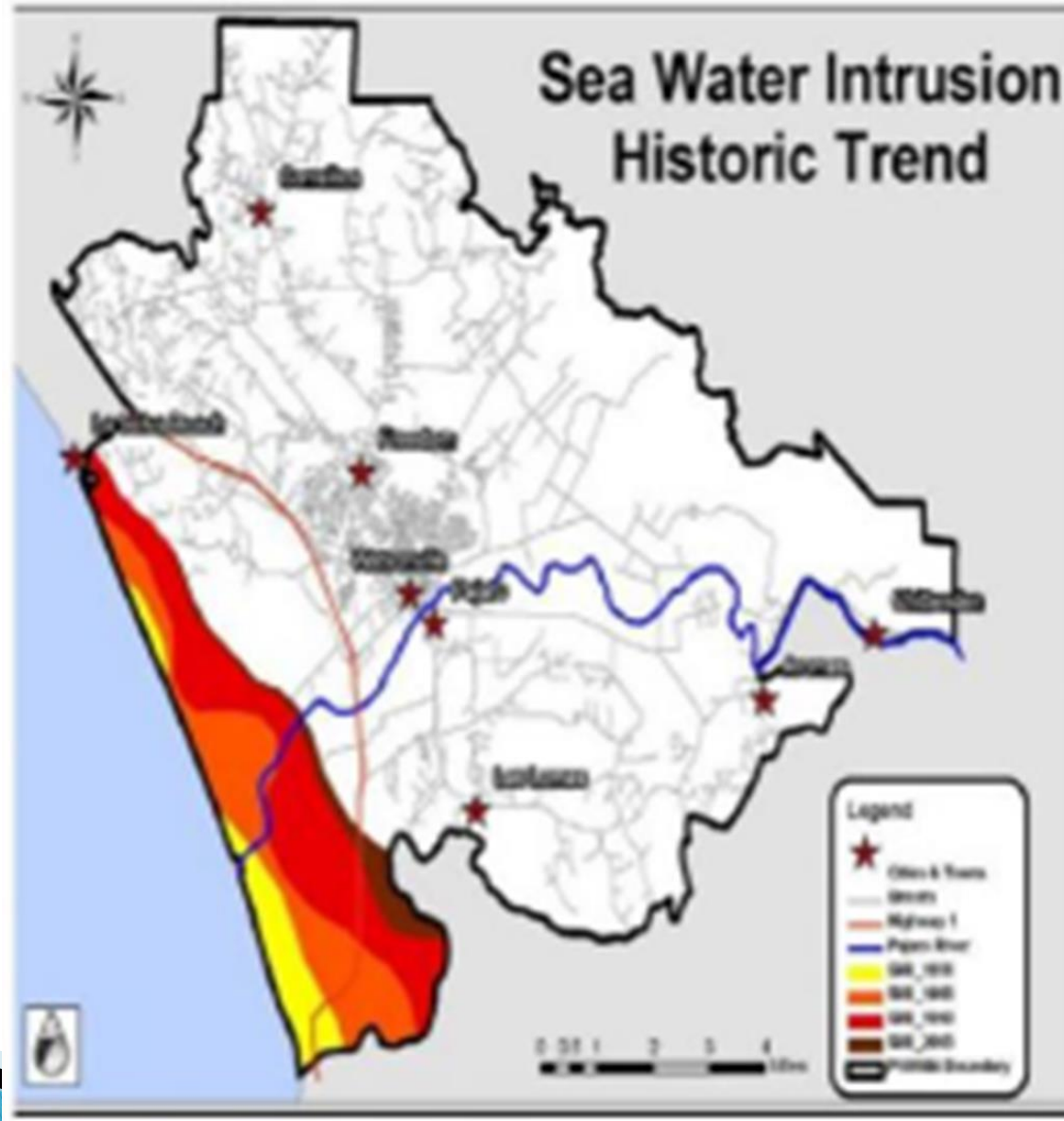
- ▶ Use only as needed to answer questions

Pajaro Groundwater Basin

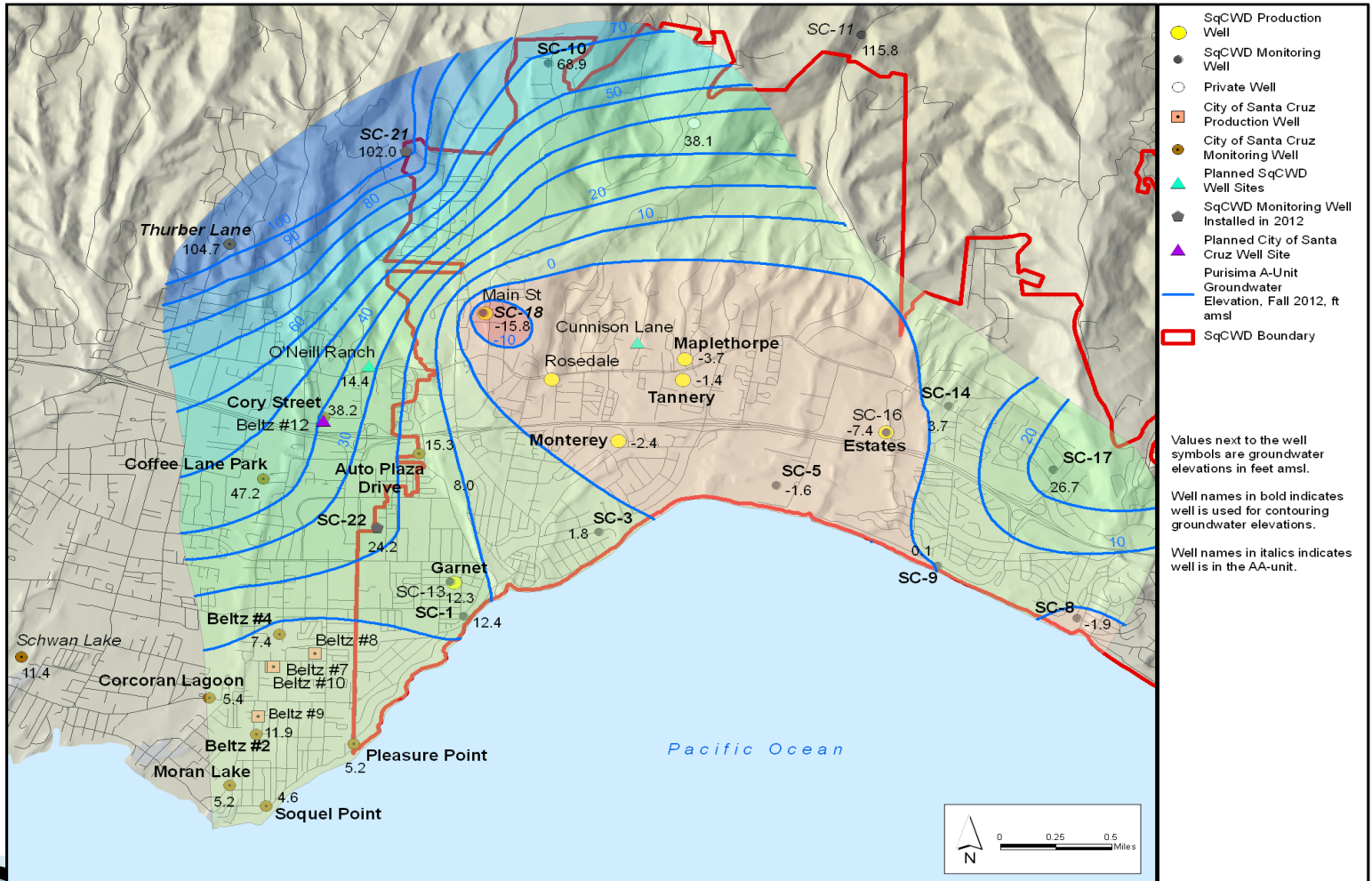




Pajaro Seawater Intrusion



Purissima A, Fall 2012



Proposed Santa Cruz County Groundwater Basin Boundaries

