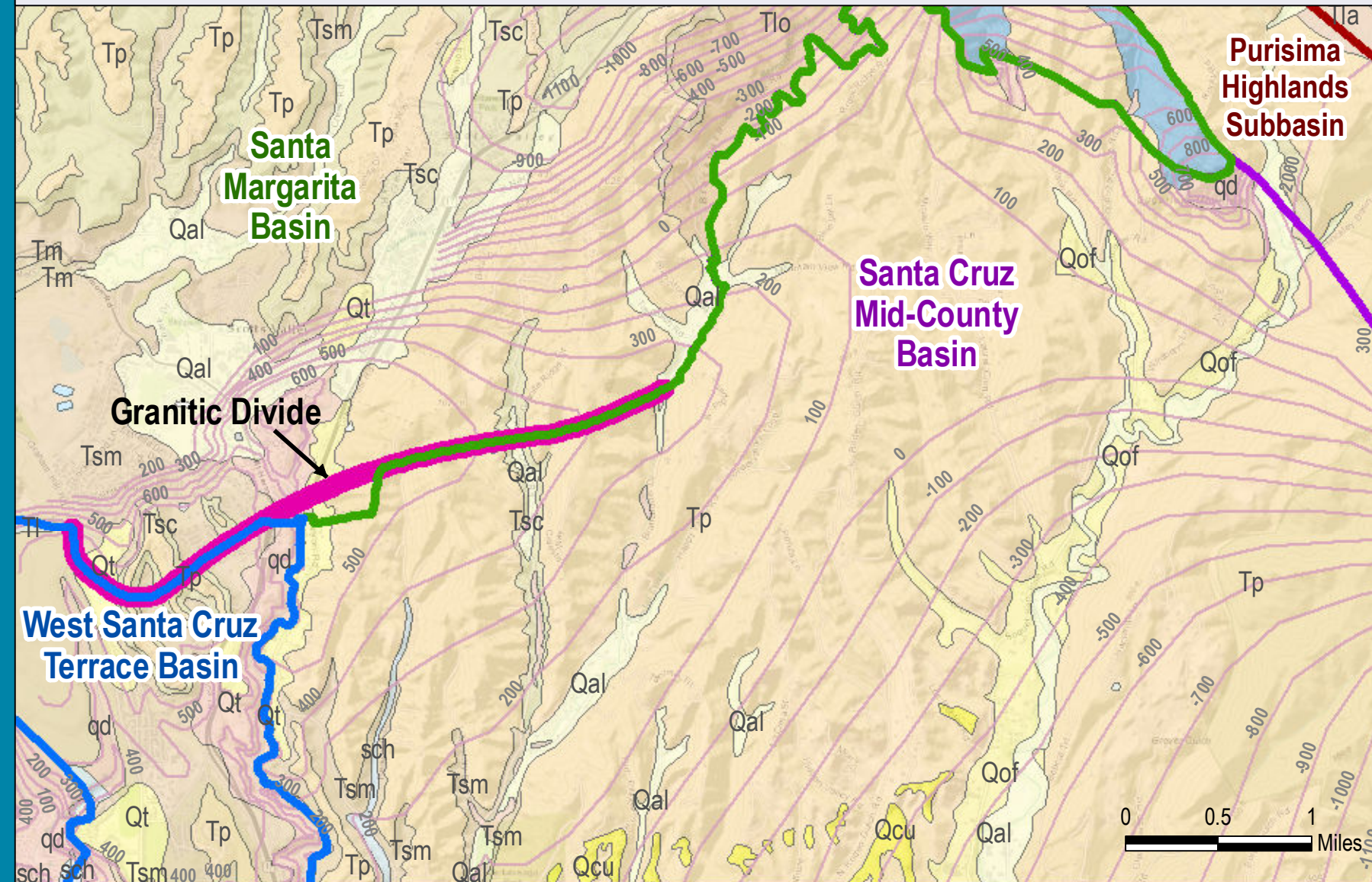


First Steps in Inter-Basin Coordination for SGMA Basin Boundary Modification Requests in Santa Cruz County

Cameron Tana, Sean Culkin, Nicholas Byler, and Derrick Williams
HydroMetrics Water Resources Inc., Oakland CA, USA, Cameron@HydroMetricsWRI.com

Scientific Justification for Shared Boundary

SVWD and MGA recognized in early planning the need to coordinate basin boundary modification where aquifer units of basins overlap. MGA agreed with SVWD's conceptual proposal to include all aquifer units that provide water supply to SVWD as part of the Santa Margarita Basin. The boundary between the two basins was then modified on the scientific basis of a geologic structural divide in the granite basement rock underlying the aquifers of each basin. HydroMetrics WRI worked with a former Santa Cruz County geologist to refine the alignment of this divide, which had also been identified in previous studies of the area.



Three eligible agencies in Santa Cruz County submitted basin boundary modification requests under the Sustainable Groundwater Management Act (SGMA) to California Department of Water Resources (DWR) during the first submittal period ending March 2016. DWR has recommended approval of the modifications which would result in three basins defined based on the groundwater resource providing supply for each agency.

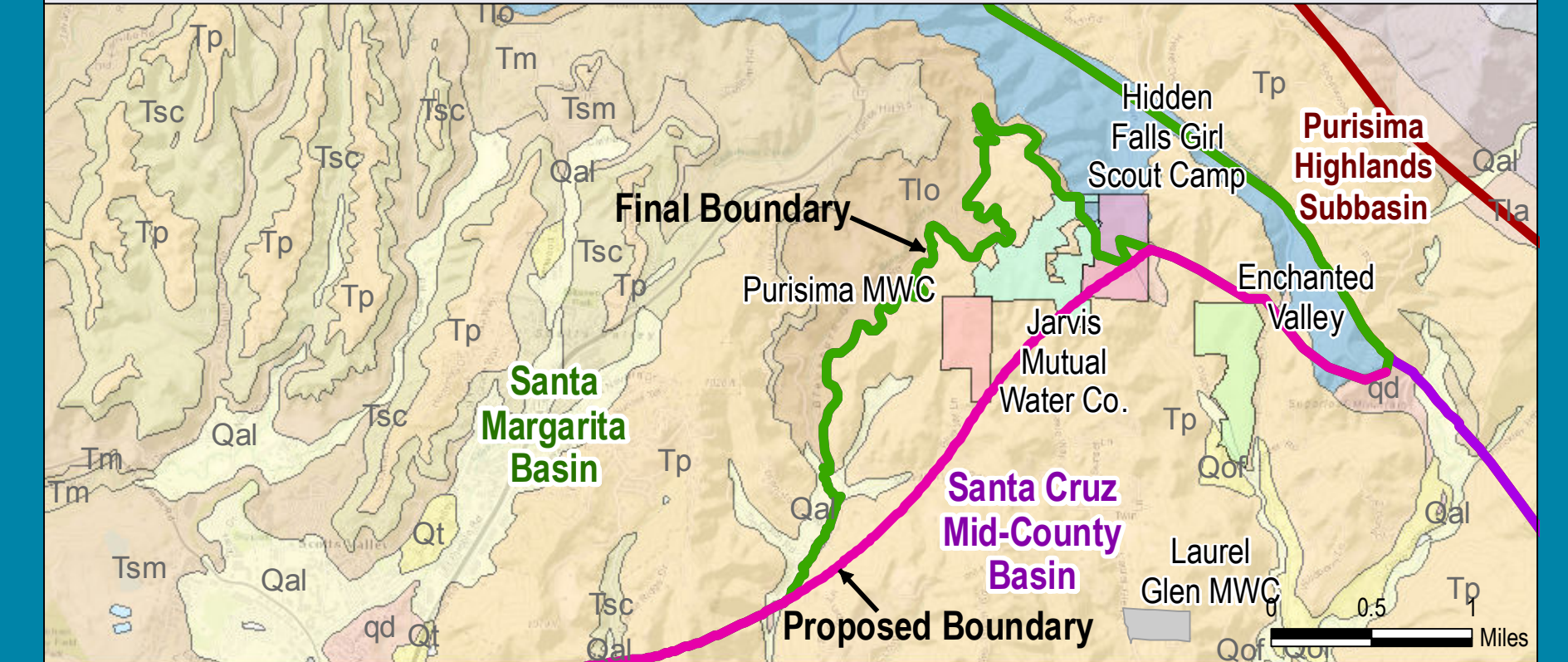
These modifications involved shared boundaries between the proposed basins. The basin boundary modifications have the advantage of removing the need for intra-basin coordination agreements between the agencies, but inter-basin coordination will still be necessary for these connected basins. By collaboratively working on the modifications of the shared basin boundaries, the agencies have taken good first steps for future inter-basin coordination to achieve groundwater sustainability in Santa Cruz County.

Modified Basin	Requesting Agency
Santa Margarita Basin	Scotts Valley Water District (SVWD)
Santa Cruz Mid-County Basin	Santa Cruz Mid-County Groundwater Agency (MGA) ¹
Pajaro Valley Subbasin	Pajaro Valley Water Management Agency (PVWMA)

¹ Request submitted by MGA predecessor Soquel-Aptos Groundwater Management Committee. MGA members are Central Water District, City of Santa Cruz, County of Santa Cruz and Soquel Creek Water District.

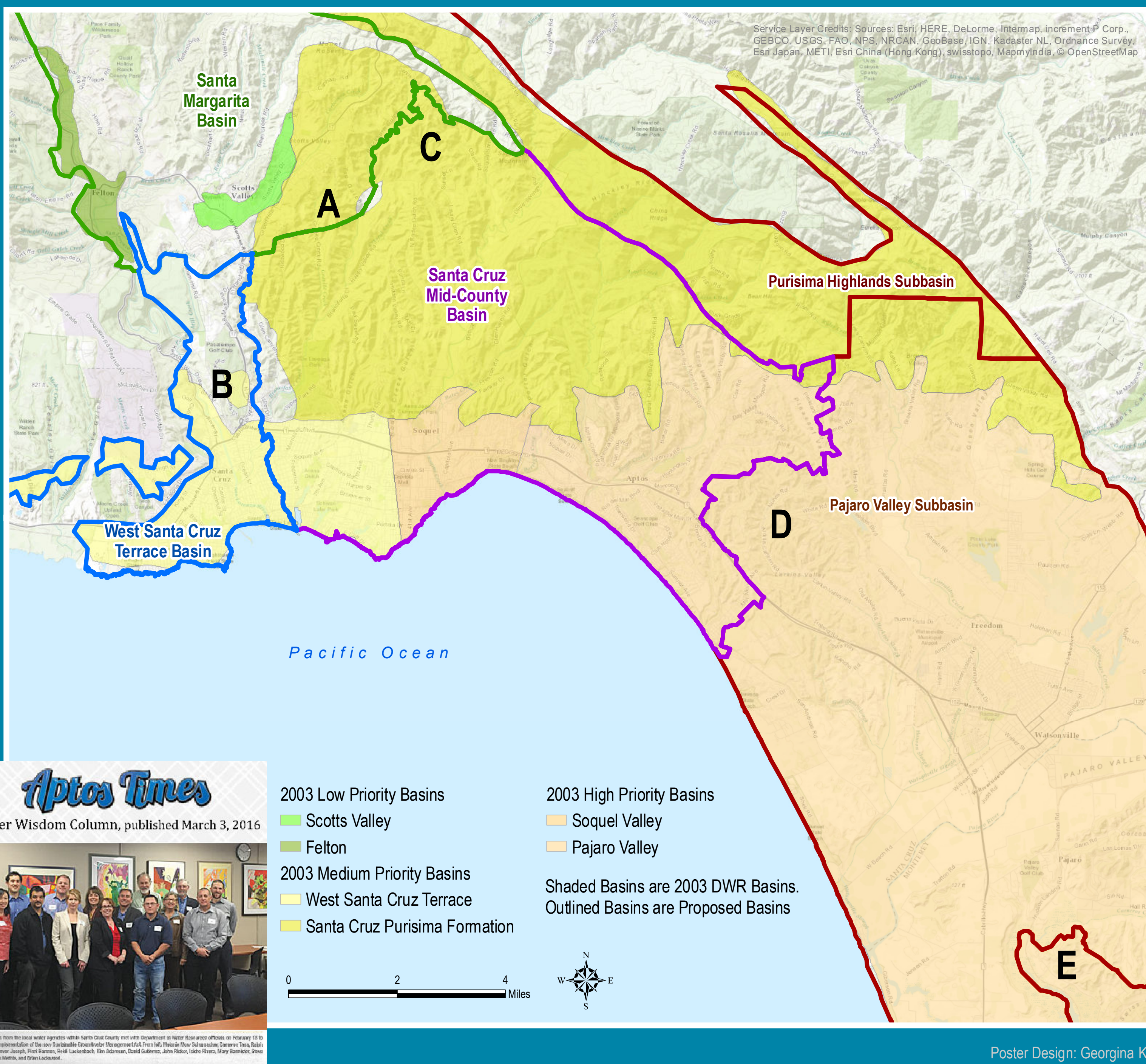
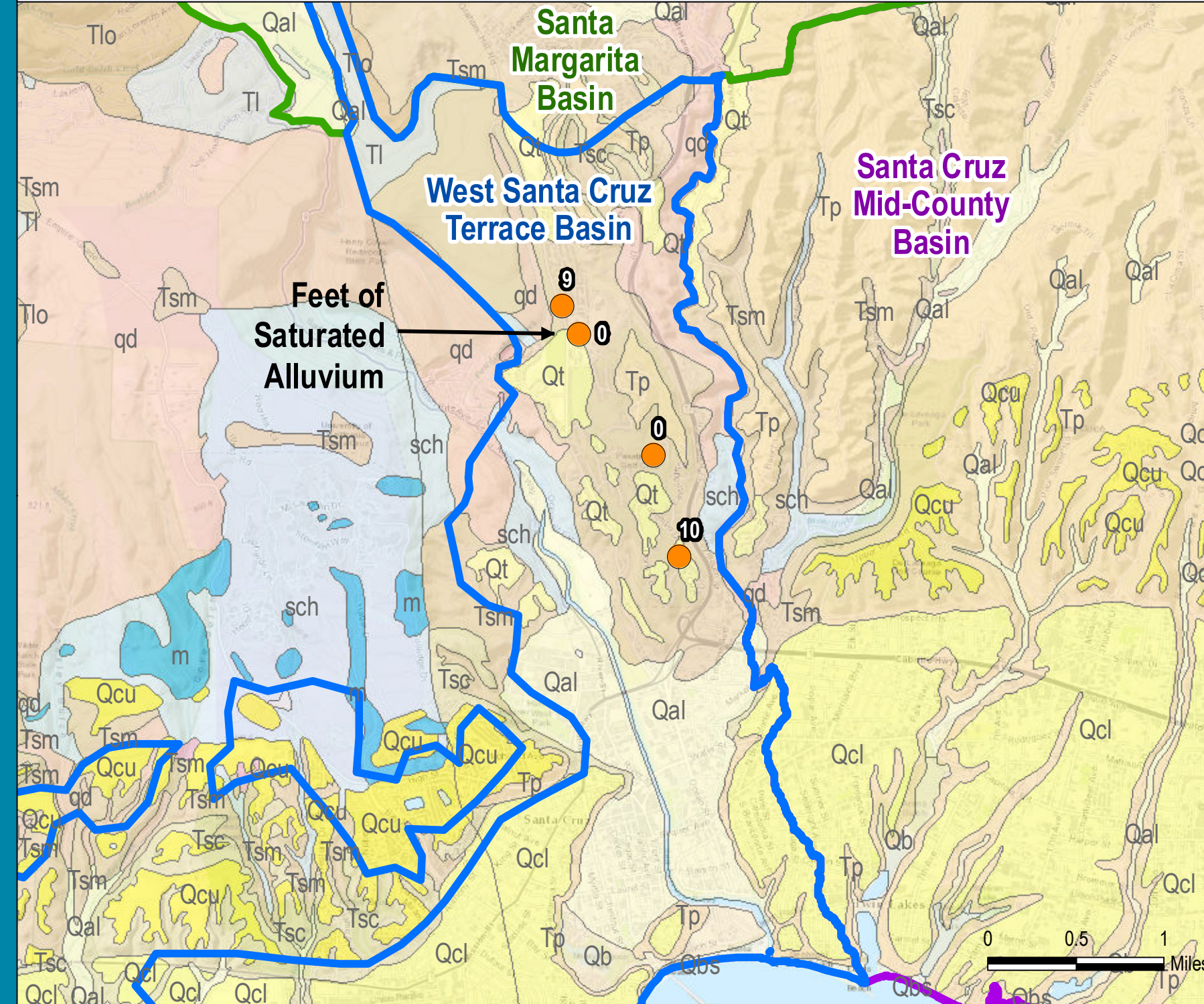
Revision Based on Local Input

Purisma Mutual Water Company submitted a letter of opposition to SVWD and MGA's proposed shared boundary arguing that it should be in the Mid-County Basin, not the Santa Margarita Basin as proposed. The aquifer units of the basins overlap in this area so both positions are scientifically justified. SVWD and MGA collaborated on a revision that addressed Purisma MWC's comments.



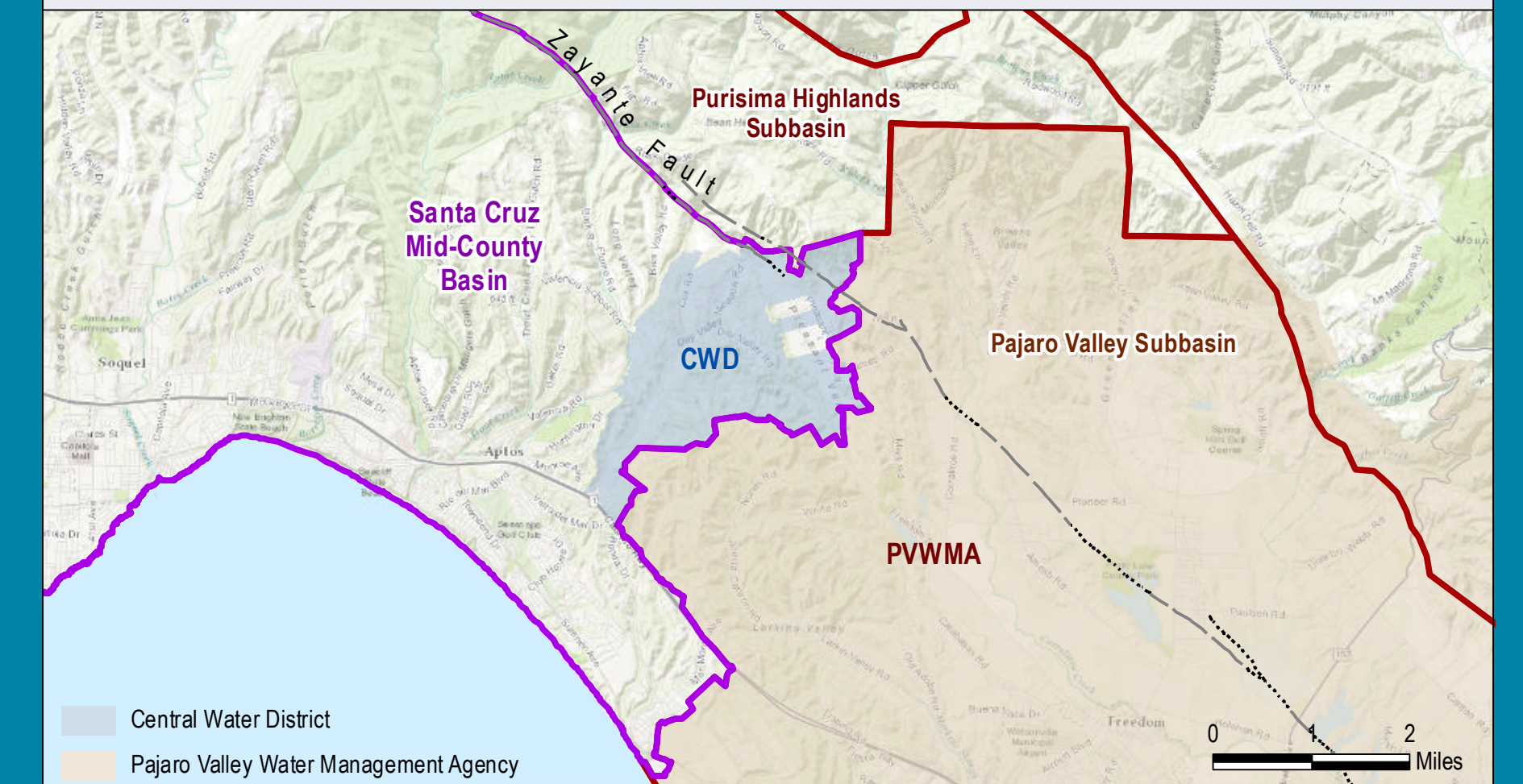
Response to DWR Modification

In approving the Santa Margarita Basin, DWR originally proposed a modification that extended the basin down to the existing West Santa Cruz Terrace Basin. On behalf of SVWD, HydroMetrics WRI provided information accepted by DWR that limited the southern extent of Santa Margarita Basin. HydroMetrics WRI suggested possibly extending the expected low priority West Santa Cruz Terrace Basin northward instead. This suggestion was made after consultation with MGA member City of Santa Cruz, the agency within West Santa Cruz Terrace Basin.



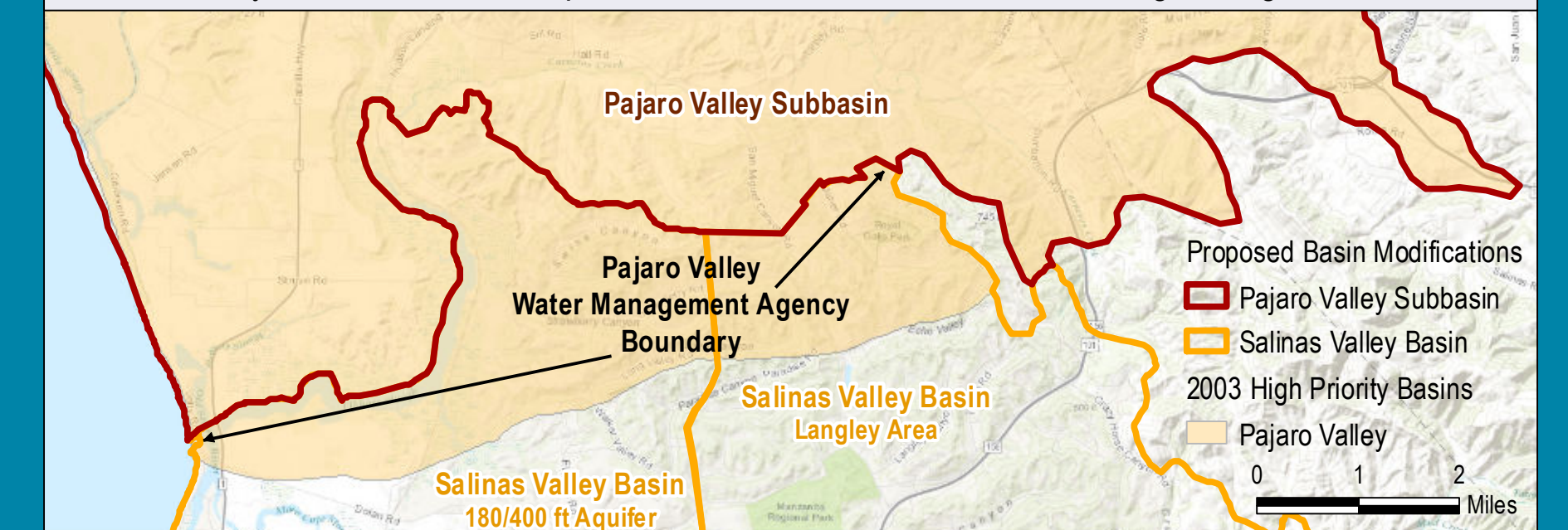
Keeping Water Agencies within Single Basins

Recognizing PVWMA's exclusive right under SGMA to be the Groundwater Sustainability Agency (GSA) for its jurisdiction, MGA's request for the Mid-County Basin boundary was based on PVWMA's jurisdiction. Also, Mid-County Basin includes the whole jurisdiction of MGA member Central Water District (CWD) so that CWD is not also in the Purisma Highlands Subbasin. The expected low priority of this subbasin was communicated to PVWMA which had not yet decided to submit its modification request to prevent overlap with this subbasin.



Revision to Monterey County Subbasins

PVWMA's modification request defines the Pajaro Valley Subbasin boundary based on PVWMA's jurisdiction without creating new basins. This requires increasing the area of Salinas Valley subbasins. PVWMA obtained a letter from Monterey County Water Resources Agency (MCWRA) during the public comment period supporting the expansion of the Salinas Valley subbasins as the expanded areas includes MCWRA's existing management zones.

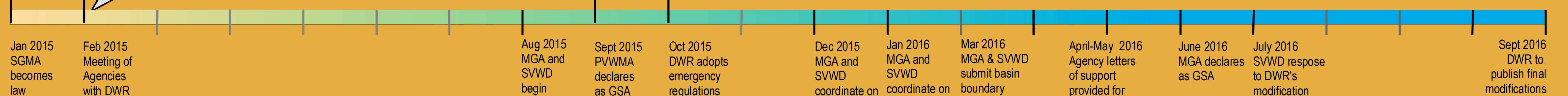


2003 Low Priority Basins
 2003 High Priority Basins
 2003 Medium Priority Basins
 Shaded Basins are 2003 DWR Basins.
 Outlined Basins are Proposed Basins

Prepared for Poster Presentation
2016 Conference & Annual Meeting
September 28-29, 2016
Groundwater Resources Association of CA

HydroMetrics WRI work under contract to:
Scotts Valley Water District (SVWD)
Santa Cruz Mid-County Groundwater Agency (MGA)
Pajaro Valley Water Management Agency (PVWMA)

Process
Timeline



A

D

A

C

E

B

